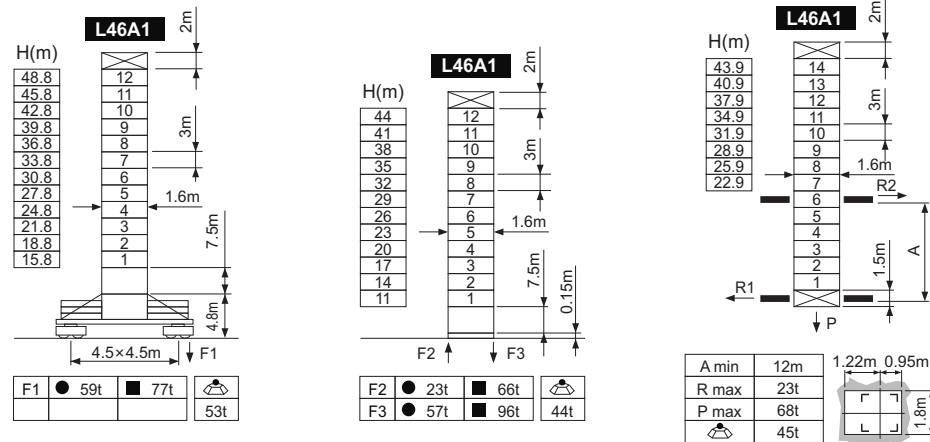


- ①=10m
- ②=5m
- ③=10m
- ④=10m
- ⑤=10m
- ⑥=10m
- ⑦=5m

Height under hook



● In service F Reactions ■ Out of service ⊕ Without load and ballast with longest jib and maximum height

Load diagrams

		60m	17m	20m	22m	25m	27m	30m	32m	35m	37m	40m	42m	45m	47m	50m	52m	55m	57m	60m
2falls	3t	3.1m-33m	3	3	3	3	3	3	3	2.3	2.1	1.95	1.8	1.65	1.5	1.47	1.39	1.35	1.32	1.3
4falls	6t	3.1m-17m	6	4.4	3.9	3	3	2.63	2.13	1.93	1.73	1.58	1.43	1.28	1.13	1.08	1.02	0.98	0.95	0.93

		55m	17m	20m	22m	25m	27m	30m	32m	35m	37m	40m	42m	45m	47m	50m	52m	55m
2falls	3t	3.1m-33m	3	3	3	3	3	3	3	2.79	2.61	2.38	2.24	2.06	1.95	1.8	1.72	1.6
4falls	6t	3.1m-17m	6	4.97	4.42	3.77	3.41	2.98	2.62	2.41	2.23	2	1.86	1.6	1.57	1.42	1.34	1.22

		50m	17m	20m	22m	25m	27m	30m	32m	35m	37m	40m	42m	45m	47m	50m
2falls	3t	3.1m-38.5m	3	3	3	3	3	3	3	3	3	2.87	2.71	2.5	2.37	2.2
4falls	6t	3.1m-19.9m	6	5.98	5.33	4.56	4.15	3.65	3.22	3	2.62	2.49	2.33	2.12	1.99	1.82

		45m	17m	20m	22m	25m	27m	30m	32m	35m	37m	40m	42m	45m
2falls	3t	3.1m-38.5m	3	3	3	3	3	3	3	3	3	2.87	2.71	2.5
4falls	6t	3.1m-19.9m	6	5.98	5.33	4.56	4.15	3.65	3.22	3	2.62	2.49	2.33	2.12

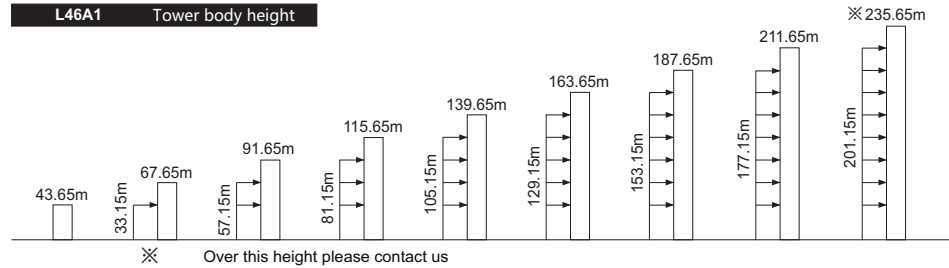
		40m	17m	20m	22m	25m	27m	30m	32m	35m	37m	40m
2falls	3t	3.1m-38.5m	3	3	3	3	3	3	3	3	3	2.87
4falls	6t	3.1m-19.9m	6	5.98	5.33	4.56	4.15	3.65	3.22	3	2.62	2.49

		35m	17m	20m	22m	25m	27m	30m	32m	35m
2falls	3t	3.1m-35m	3	3	3	3	3	3	3	3
4falls	6t	3.1m-19.9m	6	5.98	5.33	4.56	4.15	3.65	3.22	3

		30m	17m	20m	22m	25m	27m	30m
2falls	3t	3.1m-30m	3	3	3	3	3	3
4falls	6t	3.1m-19.9m	6	5.98	5.33	4.56	4.15	3.65

Anchorage

L46A1 Tower body height



Mechanisms

Hoisting	33PC15	2 falls	m/min	8	38	76	24/24/4.5kW	Drum capacity
			t	3	3	1.5		
4 falls		m/min	4	19	38		450m	
		t	6	6	3			>450m*

Trolleying	95JXL	0 ~ 60m/min	95Nm
Slewing	RCV95	0 ~ 0.8r/min	2×95Nm
Traveling	RT324	0 ~ 25m/min	2×5.2kW
380V(±5%) 50Hz	57kVA		

* Please consult us △ Option

