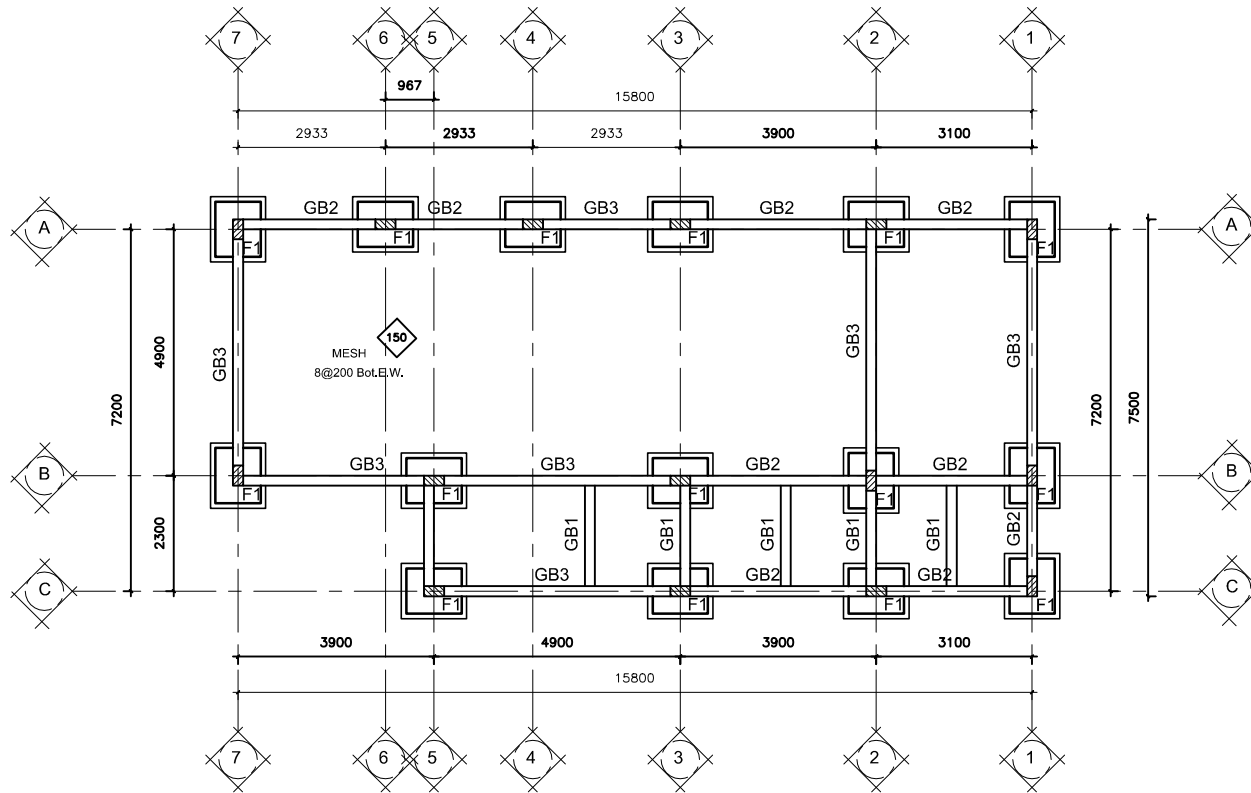


### Footings Schedule

Footing ID	R.C. Dim. (mm)			Lower Rft.		Upper Rft.		Reinforcement Shape	Notes
	Long	Short	Depth	In Long Dir.	In Short Dir.	In Long Dir.	In Short Dir.		
F1	1100	900	500	7Ø14/m	9Ø14/m	---	---		

**Notes:**

- Provide plain concret 100 mm thickness projected 100 mm each side.
- Footings Cover should be 50mm around all sides.



### CONTROL ROOM FOUNDATION LAYOUT

**Notes:**

- Provide plain concret 100 mm thickness projected 100 mm each side.
- Footings Cover should be 50mm around all sides.

### NOTES

- (1) DO NOT SCALE THIS DRAWING.
- (2) ALL DIMENSION ARE MILLIMETRES AND LEVEL IN METRES UNLESS OTHERWISE NOTED.
- (3) THIS DRAWING SHALL BE READ IN CONJUNCTION WITH THE ARCHITECTURAL, LANDSCAPING, CIVILS AND MEP SERVICES DRAWINGS.
- (4) FOR GENERAL STRUCTURAL NOTES AND STANDARD DETAILS REFER TO DRG.
- (5) MATERIALS  
 CONCRETE  
 GRADE SRPC C35 S ( $f_{cu}=35N/mm^2$ ) CONCRETE IN CONTACT WITH GROUND ( PADS, GROUND SLAB, GROUND BEAM, COLUMN BELOW GROUND )  
 GRADE SRPC C35 S ( $f_{cu}=35N/mm^2$ ) ALL OTHER CONCRETE  
 REINFORCING STEEL  
 REINFORCING STEEL ASTM A 615 GRADE 60 ( $f_y = 420 Nmm^2$ )

### LEGEND



National gas & Industrial Co.

Contract N° 1664/G080195

GASCO LOADING BAYS PROJ.No. G657

	<small>This drawing is the intellectual property of KOSAN CRISPANT. It is to be used only for the project and site mentioned herein. It is not to be reproduced, stored in a retrieval system, or transmitted in any form or by any means, electronic, mechanical, photocopying, recording, or by any information storage and retrieval system, without the prior written permission of KOSAN CRISPANT.</small>	Drawn Checked Date
	SCALE AS SHOWN Proj. No. 1246_GW	Date 16/06/2020
<b>CONTROL ROOM &amp; OFFICE FACILITY</b> <b>FOUNDATION AND ISOLATED FOOTING LAYOUT</b> <b>MADINAH GASCO PLANT</b> <b>SAUDI ARABIA</b>		Prop. No. 1628230 Rev. No. 01



SITAF INTERNATIONAL CO.  
FOR CONTRACTING