

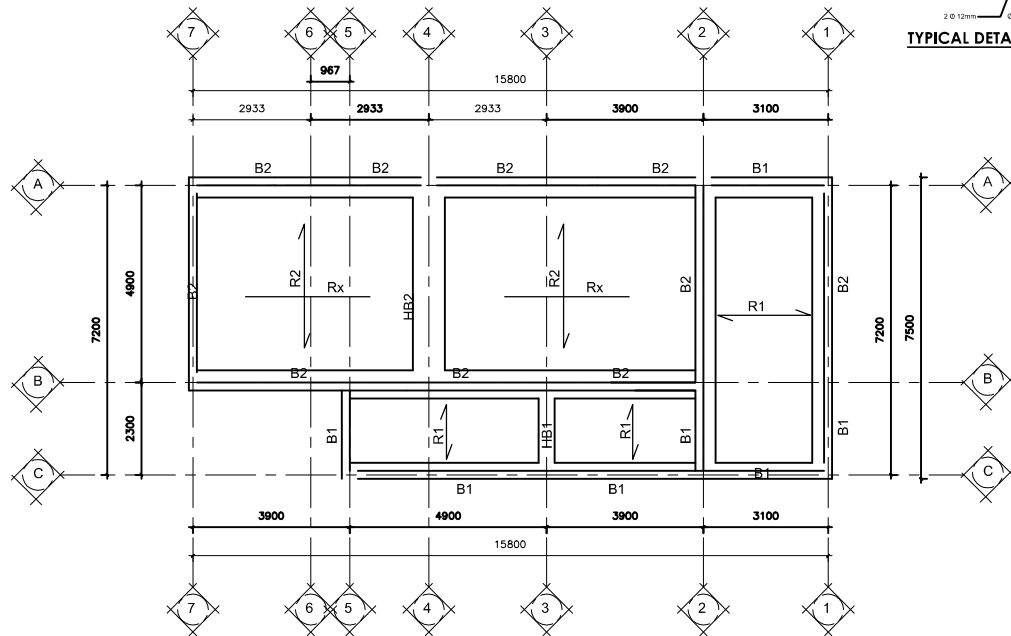
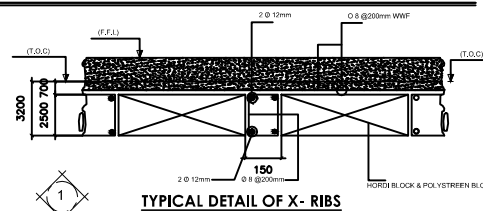
Number of Beam Stirrups branches			
Width of Beam	Less than 300 mm	Between 350 to 800 mm	Between 800 to 1200mm
Number of branches	2 - branches	4 - branches	6- branches
Stirrups Shape			

Ribs Reinforcement Schedule						
Rib ID	Dimensions		Bottom Reinforcement	Top Reinforcement	Stirrups	Notes
	Width	Depth				
R1	150	320	2 Ø 12	2 Ø 12	Ø8 @200	
R2	150	320	2 Ø 14	2 Ø 12	Ø8 @200	
Rx	200	320	3 Ø 16	3 Ø 16	Ø8 @200	

Notes:  
- Ribs Cover should be 25mm around all sides.

Beams Reinforcement Schedule									
Beam ID	Dimensions		Bottom Reinforcement		Top Reinforcement		Stirrups		Notes
	Width	Depth	Main	Extra	Conti	Extra	Zone (A)	Zone (B)	
B1	200	600	3 Ø 14	-----	2 Ø 14	4 Ø 14	Ø8@150	Ø8@200	
B2	200	600	3 Ø 16	-----	2 Ø 14	4 Ø 16	Ø8@150	Ø8@200	
HB1	400	320	4 Ø 16	-----	4 Ø 14	-----	Ø8@150	Ø8@200	
HB2	800	320	7 Ø 16	-----	6 Ø 14	-----	Ø8@150	Ø8@200	

Notes:  
- In case of beams deeper than 700 mm must be added 2Ø10 Side bars every 300 mm of depth.  
- Beams Cover Should be 30mm around all Sides.



**CONTROL ROOM SLAB LAYOUT & DETAIL**

**NOTES**

- DO NOT SCALE THIS DRAWING.
- ALL DIMENSION ARE MILLIMETRES AND LEVEL IN METRES UNLESS OTHERWISE NOTED.
- THIS DRAWING SHALL BE READ IN CONJUNCTION WITH THE ARCHITECTURAL, LANDSCAPING, CIVILS AND MEP SERVICES DRAWINGS.
- FOR GENERAL STRUCTURAL NOTES AND STANDARD DETAILS REFER TO DRG.
- MATERIALS  
CONCRETE  
GRADE SRPC C35 S (four=35N/mm<sup>2</sup>) CONCRETE IN CONTACT WITH GROUND ( PADS, GROUND SLAB, GROUND BEAM, COLUMN BELOW GROUND )  
GRADE SRPC C35 S (four=35N/mm<sup>2</sup>) ALL OTHER CONCRETE  
REINFORCING STEEL  
REINFORCING STEEL ASTM A 615 GRADE 60 (fy = 420 Nmm<sup>2</sup>)

**LEGEND**



**National gas & Industrial Co.**

Contract N° 1664/G080195

GASCO LOADING BAYS PROJ.No. G657

Drawn	Checked	Date
SCALE	AS SHOWN	
Kosan Crisplant		
CONTROL ROOM & OFFICE FACILITY SLAB LAYOUT & DETAILS MADINAH GASCO PLANT SAUDI ARABIA		
Prop. No. 1029236		Rev. No. 01



**SITAF INTERNATIONAL CO.**  
FOR CONTRACTING