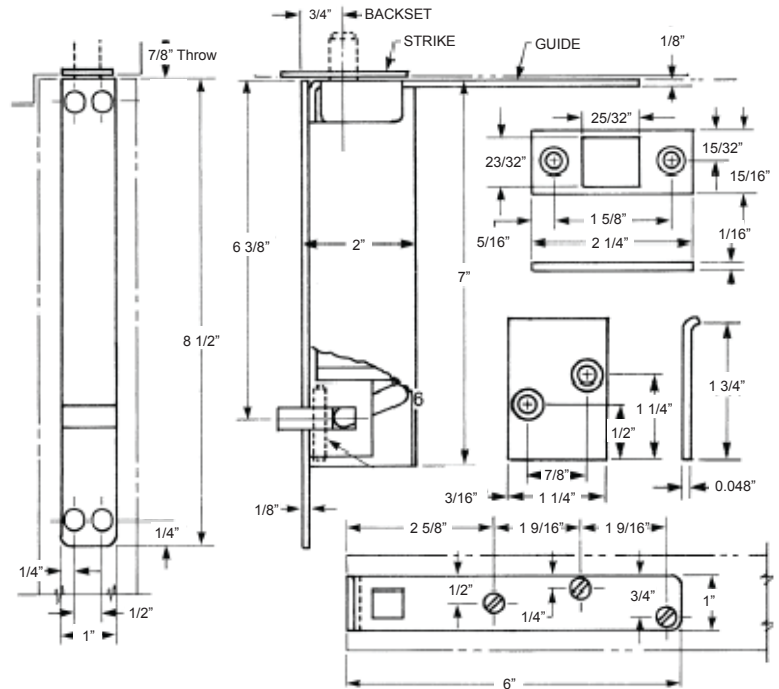


## AUTOMATIC FLUSHBOLTS FOR WOOD DOORS



**TFBA291-W**



### FEATURES

- Fully Automatic, Non-Handed.
- Automatic 3/4" Throw and 3/4" Vertical Adjustment.
- Spring Override in Case of Misalignment.
- Steel Body and Stainless Steel Components.
- Bolt Housing Screws #8 x 3/4" SM (2 ea)
- Bolt Guide Screws #10 x 7/8" SM (3 ea)
- Rub Plate Screws #8 x 3/4" SM (2 ea)
- Strike Screws #8 x 3/4" SM (2 ea)
- Bolt Housing Screws #8-32 X 1/4" MS (2 ea)
- Listed up to 1-1/2 hours on Composite Wood Doors up to 8 Feet.

### SPECIFICATIONS

**Automatic Flushbolt for Wood Doors** - Automatic flushbolts from composite wood doors shall be by **TownSteel** model number TFBA291-W series and body shall be made of steel and stainless steel components. Flushbolts shall be automatically retracting when active door is opened and projected into the frame header or floor when the door is closed. Bolts shall project 3/4" from the top or bottom edge of the door with 3/4" adjustment.

### CODE COMPLIANCE

